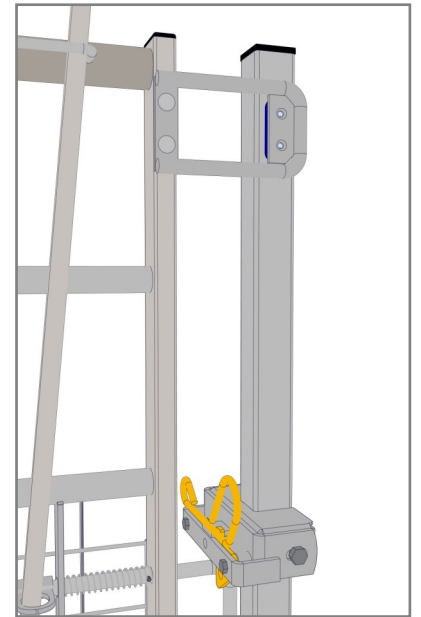


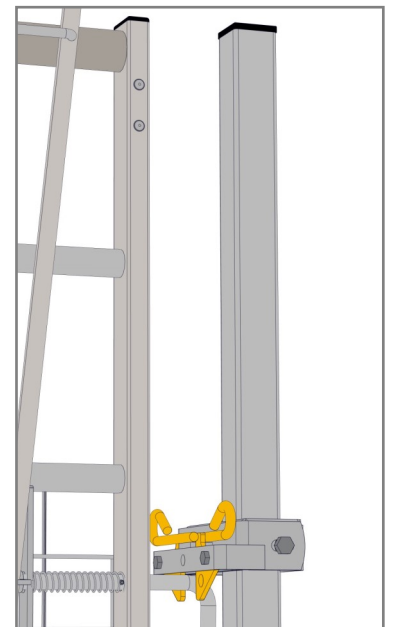
## Technical Document



1-Way Catch



2-Way Catch



Product Code(s)  
1000875-01 (1 Way)  
1000876-01 (2 Way)

## Installation Guide

### Chiltern MK2 Gate In Frame (1 Way or 2 Way)

**INTRODUCTION ..... Page 3**  
**BILL OF MATERIALS ..... Page 4-5**  
**HOW TO ASSEMBLE ..... Page 6-8**  
**RECOMMENDED MAINTENANCE..... Page 9**  
**CONTACT ..... Page 9**

## INTENDED USE

Galvanised steel mesh gate, integral H-frame, easy latch and self closing gate system.

## TECHNICAL DATA

Item Number: 1000875-01/1000876-01

Dimensions (W x H): Approx. 1925 x 1955

## SAFETY INFORMATION

PLEASE TAKE NOTE OF THE FOLLOWING SAFETY PRECAUTIONS BEFORE USE FOR THE WELLBEING OF ALL ANIMALS AND PERSONNEL. ANY HARM OR INJURY WHICH OCCURS FROM THE LACK OF COMPLIANCE WITH THESE HEALTH AND SAFETY MEASURES WILL BE THE RESPONSIBILITY OF THE OPERATOR.

- IMPORTANT!** Read these instructions carefully before use and keep them for future reference.
- Situate this product on a level, solid surface.
- Personal protection may be required for some stages of installation.
- CAUTION!** When handling heavy equipment, some stages of installation may require at least two people.
- DO NOT** lean on or exert undue pressure on the product.
- CAUTION!** Check posture when lifting/manoeuvring the equipment or associated parts.
- ALWAYS** Check the product for damage before each use.

If you have any questions or comments regarding the product, we will be glad to hear them, you can do this by contacting our sales team, Call: +44 (0)1782 339348 or Email: [sales@centrewire.com](mailto:sales@centrewire.com).

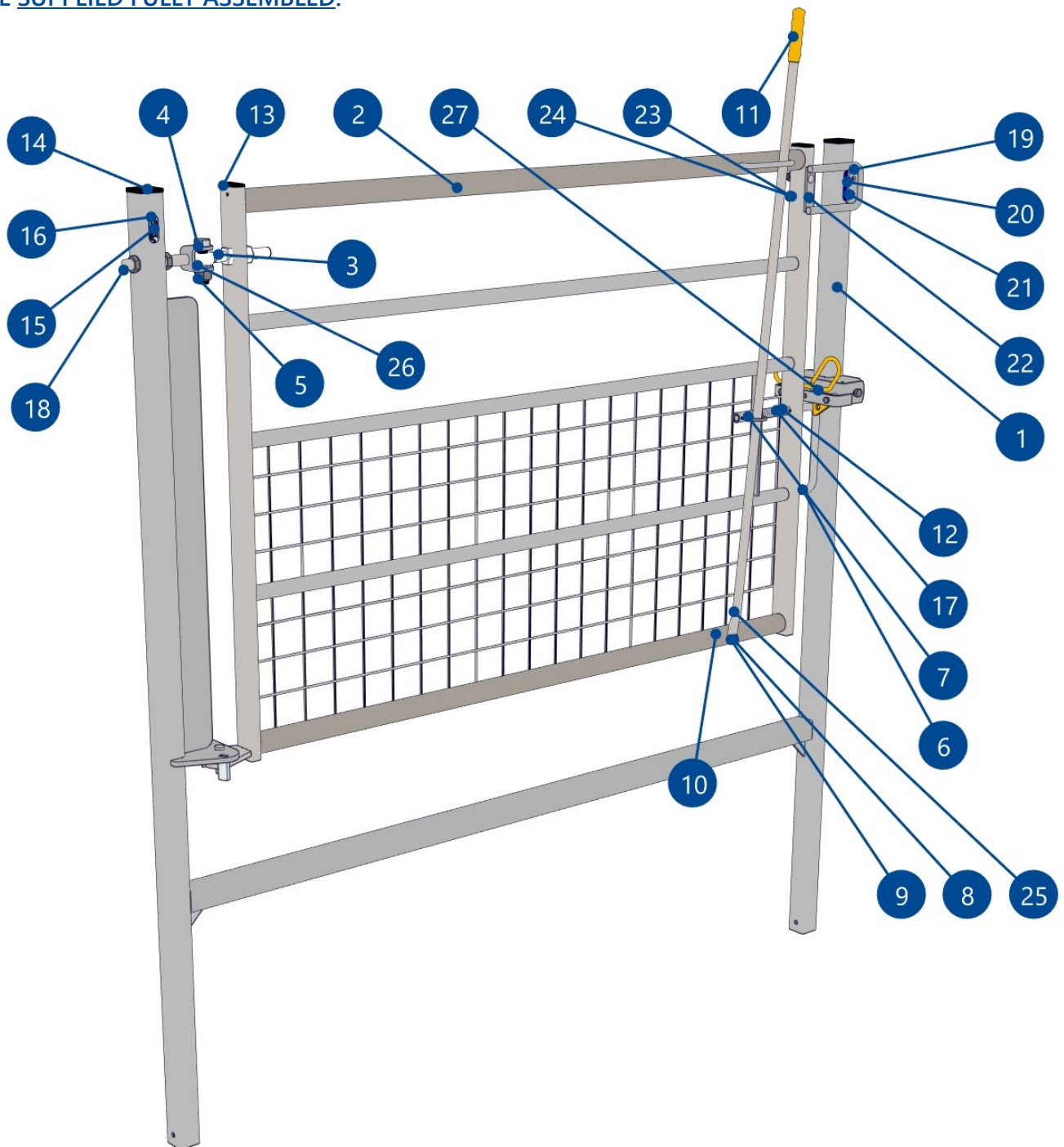


## PRECAUTIONS

- NOT SUITABLE FOR USE IN A STRAINED FENCE LINE.**
- AVOID UNEVEN AND DAMP GROUND.**
- REMOVE OVERHANGING BRANCHES OR EXPOSED ROOTS.**
- CONSIDER THE EXISTING FENCE LINE OR BOUNDARY THAT MAY DIRECTLY IMPACT THE SITING OF THE PRODUCT.**

# PRODUCT BOM 1000875-01 (1 Way)

ALL FEATURES LISTED BELOW ARE FITTED TOGETHER AT THE FACTORY AND WILL BE SUPPLIED FULLY ASSEMBLED.

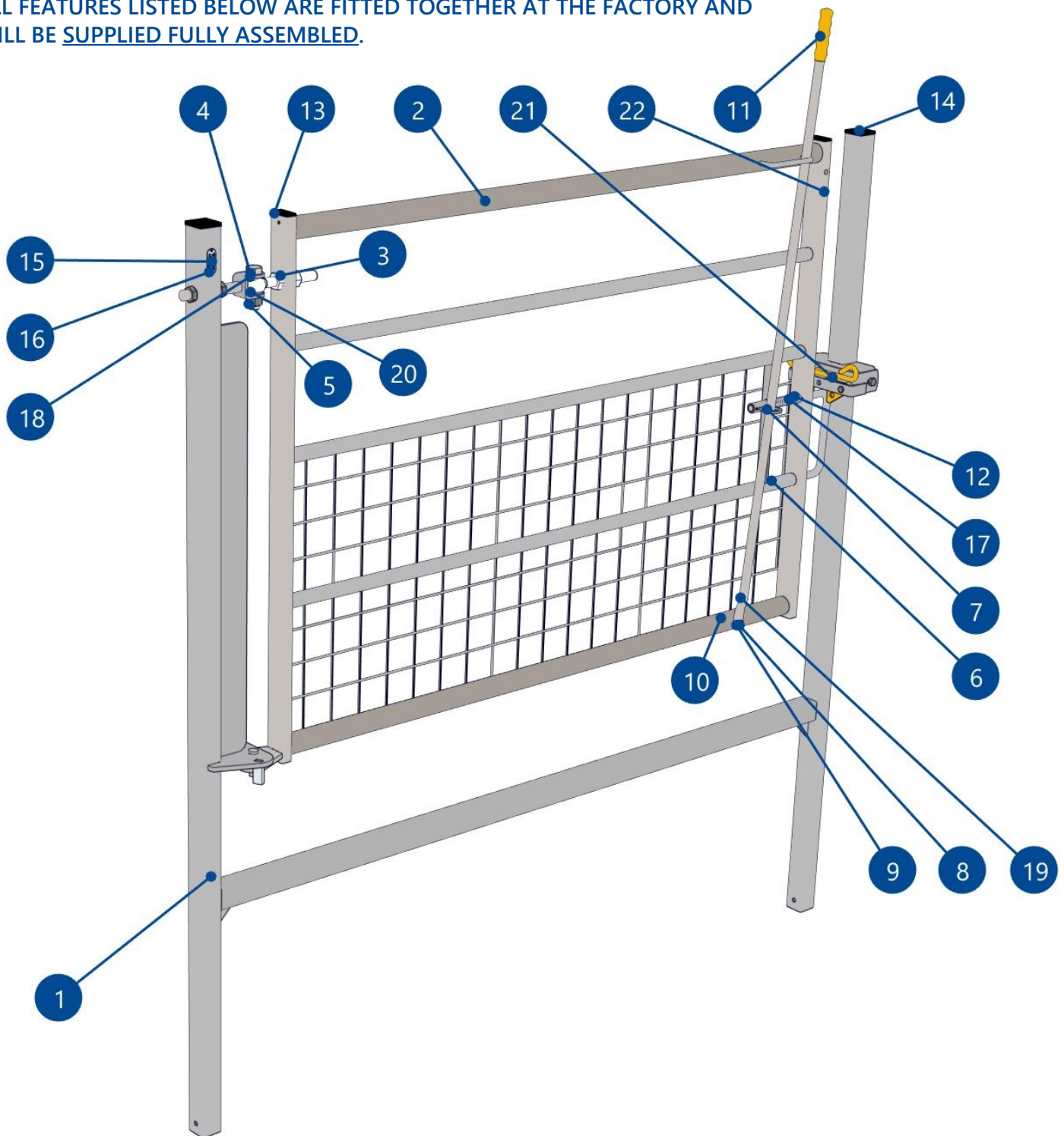


| BOM ID | DESCRIPTION                  | CODE         | Qty |
|--------|------------------------------|--------------|-----|
| 1      | H FRAME                      | 1000877      | 1   |
| 2      | GATE                         | 1000885      | 1   |
| 3      | 20mm EYE ON 20mm STUDDING    | B104 1220 33 | 1   |
| 4      | M20 X 70 BOLT                | B003 3200 70 | 1   |
| 5      | M20 NYLOC NUT                | B040 3002 20 | 1   |
| 6      | SLIDING D LOOP               | 1000897      | 1   |
| 7      | HANDLE CONNECTOR 55L         | 1000894      | 1   |
| 8      | M10 X 65 BOLT                | B003 3100 65 | 1   |
| 9      | M10 WASHER                   | B041 3050 10 | 1   |
| 10     | M10 FULL NYLOC NUT           | B040 3002 10 | 1   |
| 11     | GRIP HANDLE                  | 1000219      | 1   |
| 12     | SELLOC PIN                   | B051 3050 25 | 2   |
| 13     | 50 X 25 BLACK PLASTIC INSERT | B115 2050 10 | 2   |
| 14     | 50 X 50 BLACK PLASTIC INSERT | B115 1050 20 | 2   |

| BOM ID | DESCRIPTION             | CODE         | Qty |
|--------|-------------------------|--------------|-----|
| 15     | BADGE "CENTREWIRE"      | B111 0020 10 | 1   |
| 16     | RIVET                   | B052 4032 08 | 2   |
| 17     | COMP SPRING             | B142 0212 30 | 1   |
| 18     | JAW TYPE HINGE C/W NUTS | 1000905      | 1   |
| 19     | BOLT ON ONE WAY STOP    | 1000898      | 1   |
| 20     | RUBBER BUMP STOP        | B117 8102 01 | 1   |
| 21     | SNAKE EYE SECUR/SCREW   | B027 9906 12 | 2   |
| 22     | M8 X 65 CUP SQ BOLT     | B009 2080 65 | 2   |
| 23     | M8 PERMACONE NUT        | B040 2008 08 | 2   |
| 24     | M8 WASHER               | B041 2006 08 | 2   |
| 25     | BRIDLE HANDLE           | D010 2003 06 | 1   |
| 26     | M20 NYLON WASHER        | B041 5001 20 | 2   |
| 27     | 1-WAY LATCH KIT         | 1000903      | 1   |

# PRODUCT BOM 1000876-01 (2 Way)

ALL FEATURES LISTED BELOW ARE FITTED TOGETHER AT THE FACTORY AND WILL BE SUPPLIED FULLY ASSEMBLED.



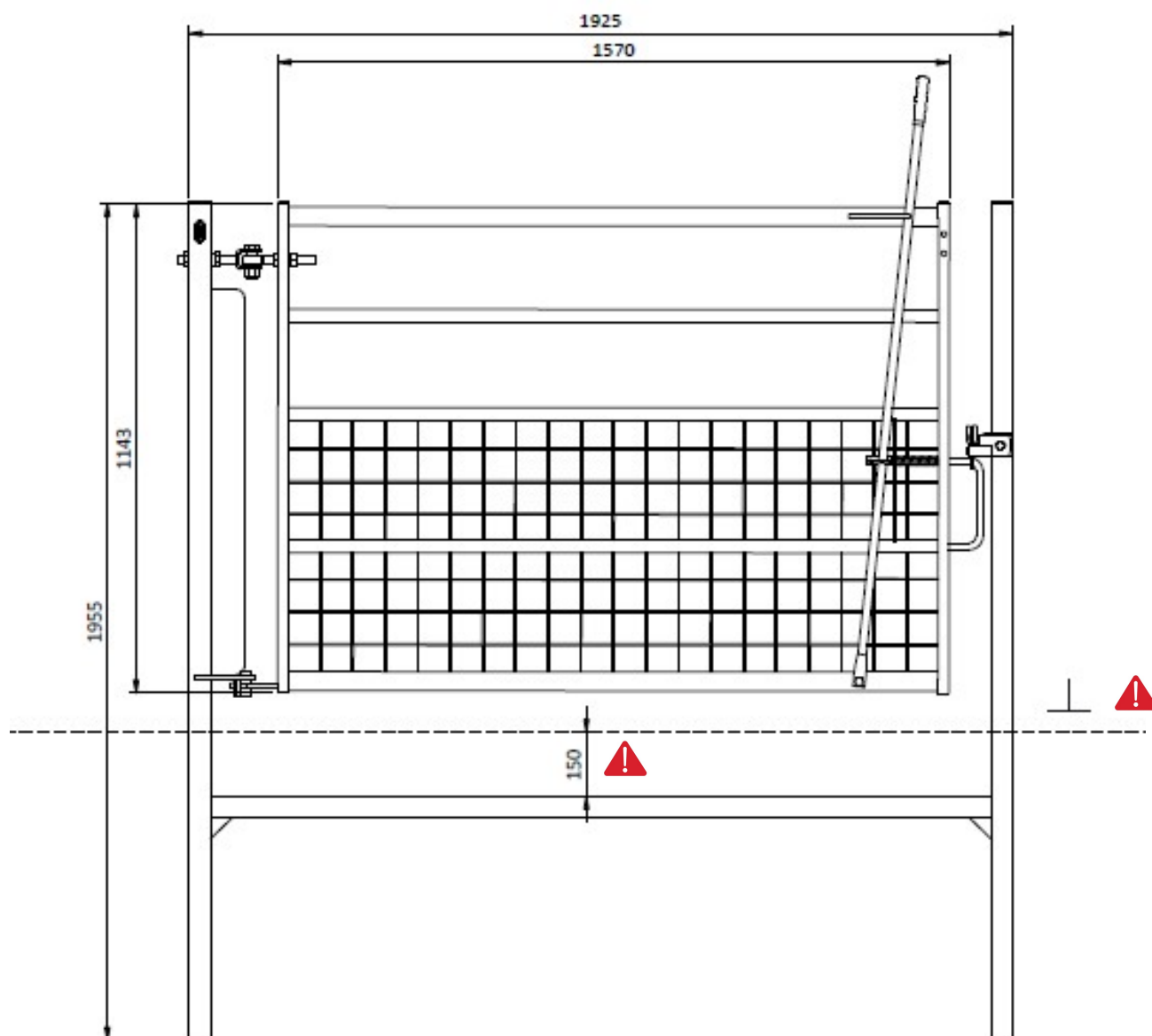
| BOM ID | DESCRIPTION               | CODE         | Qty |
|--------|---------------------------|--------------|-----|
| 1      | H FRAME                   | 1000877      | 1   |
| 2      | GATE                      | 1000885      | 1   |
| 3      | 20mm EYE ON 20mm STUDDING | B104 1220 33 | 1   |
| 4      | M20 X 70 BOLT             | B003 3200 70 | 1   |
| 5      | M20 NYLOC NUT             | B040 3002 20 | 1   |
| 6      | SLIDING D LOOP            | 1000897      | 1   |
| 7      | HANDLE CONNECTOR 55L      | 1000894      | 1   |
| 8      | M10 X 65 BOLT             | B003 3100 65 | 1   |
| 9      | M10 WASHER                | B041 3050 10 | 1   |
| 10     | M10 FULL NYLOC NUT        | B040 3002 10 | 1   |
| 11     | GRIP HANDLE               | 1000219      | 1   |
| 12     | SELLOC PIN                | B051 3050 25 | 2   |

| BOM ID | DESCRIPTION                  | CODE         | Qty |
|--------|------------------------------|--------------|-----|
| 13     | 50 X 25 BLACK PLASTIC INSERT | B115 2050 10 | 2   |
| 14     | 50 X 50 BLACK PLASTIC INSERT | B115 1050 20 | 2   |
| 15     | BADGE "CENTREWIRE"           | B111 0020 10 | 1   |
| 16     | RIVET                        | B052 4032 08 | 2   |
| 17     | COMP SPRING                  | B142 0212 30 | 1   |
| 18     | JAW TYPE HINGE C/W NUTS      | 1000905      | 1   |
| 19     | BRIDLE HANDLE                | D010 2003 06 | 1   |
| 20     | M20 NYLON WASHER             | B041 5001 20 | 2   |
| 21     | 2 WAY LATCH KIT              | 1000902      | 1   |
| 22     | BLANKING PLUG                | 1003437      | 4   |

# HOW TO ASSEMBLE

## STEP 1. EXCAVATION

Dig x2 holes (for posts) and a shallow trench (for cross bar), depth into ground deep should be enough to allow the cross bar of the H frame to be 150mm-200mm below ground level.



## STEP 2. PLACEMENT

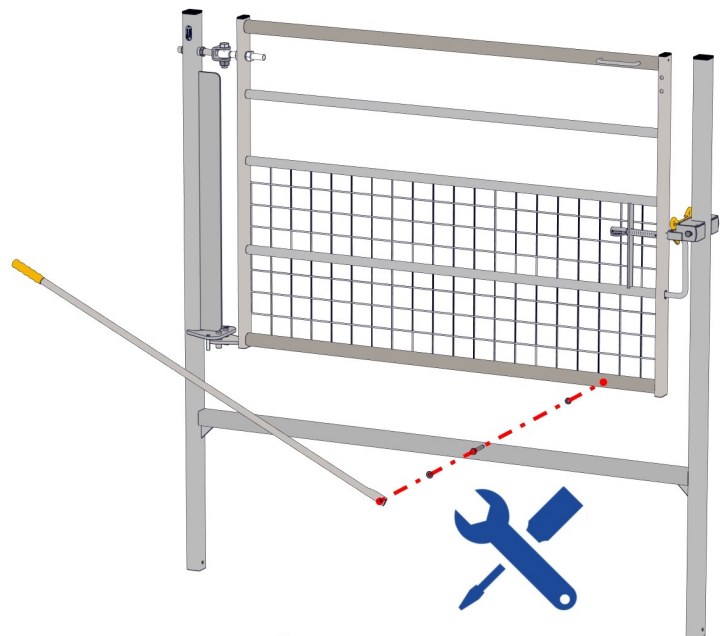
**CHECK ALIGNMENT OF THE GATE IN FRAME IS LEVEL AND PERPEDICULAR, THE GATE IN FRAME MUST BE PERFECTLY LEVEL, EVEN IF THE EXISTING ADJADCENT FENCE LINE IS NOT!** installing this product not level could potentially result in failure to operate the gate.

## STEP 3. EMBED

Set the posts and crossbar into ground with rubble and/or concrete.

## STEP 4. SET HANDLE TO OPERATE MODE

Handle is assembled down for security in transportation.



Disassemble handle to reposition for use.



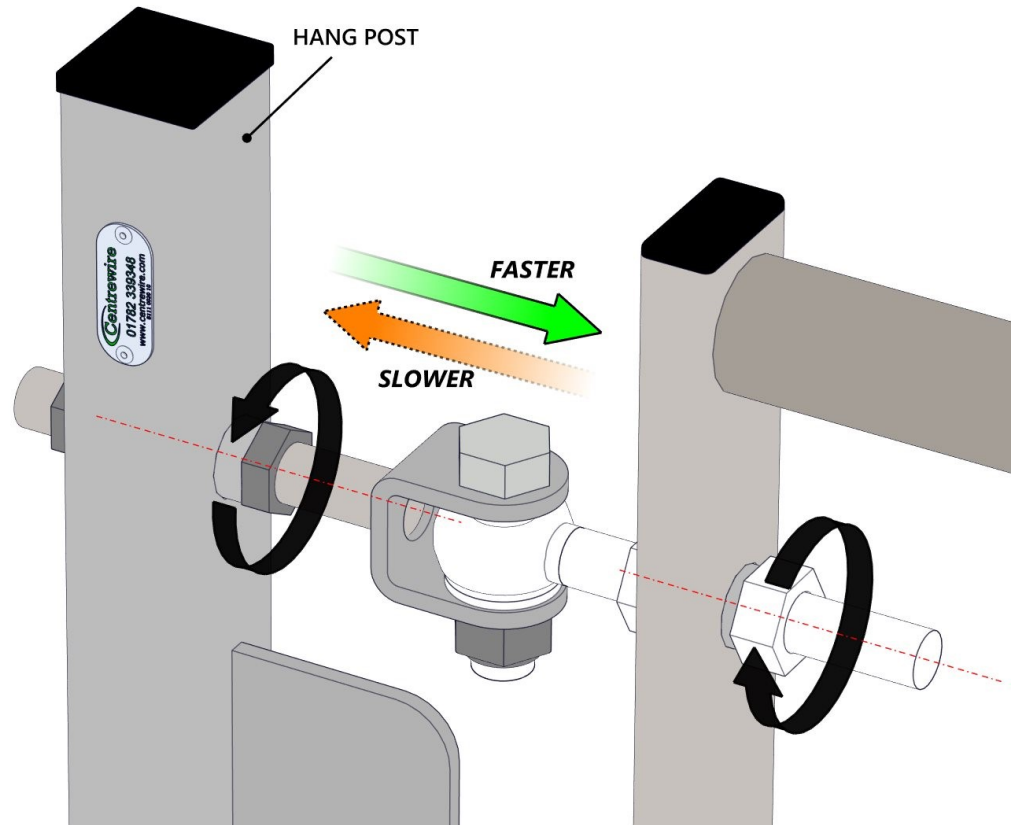
Ensure the handle is inserted through the top rail loop and sliding D loop before fastening.

Handle assembled. ✓

## STEP 5. ADJUST CONTROLLED SPEED HINGE SYSTEM

By adjusting the position of the top hinge pivot point the closing speed of the gate will become faster or slower.

Untightening the bolts allows the operator to move the top hinge assembly either towards the hang post, **for slower closing speed**, or, away from hang post **for faster closing speed**.



- RETIGHTEN BOLTS TO MAINTAIN SET SPEED!**
- ADJUSTMENT TO BE MADE AFTER THE GATE HAS BEEN INSTALLED!**

## STEP 6. COMPLETION

Final checks,

- CHECK ALL NUTS ARE SECURE.**
- REMOVE ANY ROUGH PATCHES OF ZINC WITH A FILE OR SANDPAPER.**



## RECOMMENDED MAINTENANCE

REGULAR MAINTENANCE CHECKS TO THE PRODUCT WILL GIVE EARLYING WARNING OF ANY PROBLEMS, SUCH AS DAMAGE, CORROSION OR MISSING PARTS AND WILL ENSURE YOUR PRODUCT IS RUNNING SMOOTHLY AND SAFELY.

- ❑ General inspection of the entire product.
- ❑ Ensure all moving components are free of debris and are functioning correctly.
- ❑ Any damage to steelwork (causing exposure of bare metal) should be made good by rubbing down and applying x1 coat of galvanizing coating and x1 of oil based paint.
- ❑ Check all fasteners sets are tight. Ensure all parts are in place before each use.
- ❑ Remove any obstructions and cut away any vegetation growing on the kit.
- ❑ Lubricate all moving parts, in particular latches and locking systems
- ❑ Simply cleaning down after each use will increase the working life due to the highly corrosive effect of animals urine and/or faeces.

## CONTACT

Headquarters

*Centrewire Ltd  
Mossfield Road  
Adderley Green  
Stoke-on-Trent  
ST3 5BW.*

T: +44 (0)1782 339348

E: [sales@centrewire.com](mailto:sales@centrewire.com)